

RED SCALE DEGREE DAY ACCUMULATION*

AREA	BIOFIX	DD TOTAL May 20, 2024	550 DD Crawler Emergence
Arvin	March 4	710	5/5/23
Delano	March 4	829	5/1/23
Lindcove	March 4	786	5/2/23
Orange Cove	March 4	699	5/8/23
Porterville	March 4	790	5/3/23

*Temperature data and DD models retrieved from UC IPM websites.

The above red scale biofix dates are *only* a guide.

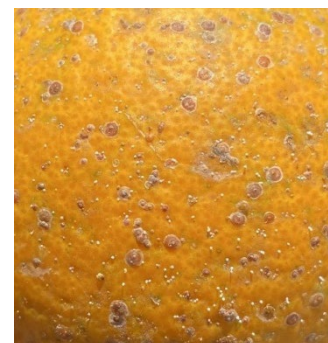


Red Scale in Citrus

FIELD NOTES: Red scale crawler emergence is occurring in Kern, Kings, Fresno, and Tulare County. Now is an ideal time in all four counties to target the first generation of red scale, while the insect is synchronized in development and on the wood or foliage. Citricola scale crawlers are active, providing the opportunity to control both Citricola scale crawlers and red scale crawlers with Centaur. Citrus thrips pressure remains light compared to last year, leaving spray rigs available to get ahead of red scale, especially in problematic blocks. Over the weekend a second citrus thrips hatch was observed with most of the thrips in the 1st stage. More adult activity is also being observed. Fruit size can range from pea-sized to over quarter-sized in earlier varieties. Two-spotted mites, red mites, and bud mites are increasing in numbers on the leaves and fruit. FujiMite can provide a powerful knockdown on these mites, as well as strong knockdown on thrips. Citrus mealybug crawlers are beginning to be found inside the canopies and are moving towards the outside. The big citrus mealybug crawler push is projected to start near the middle of this week until June 4th.

CENTAUR WDG

- Use Rate: **46 oz/A** Spray Volume: **500 to 1000 gal/A** Tractor Speed: **1 to 1.25 mph**
- **California Red Scale: Apply Centaur in May, targeting first generation early crawler emergence (550 DD)**
- To improve coverage on the foliage, add spray oil or a high-quality surfactant, following the directions for use on that product's label.
- When timing Centaur applications, it is always better to **be early rather than late. Centaur has 3 weeks of residual activity on red scale crawlers.**
- **Centaur controls:** red scale, Citricola scale, cottony cushion scale, and citrus mealybug



Red Scale Adults, Crawlers, and Whitecaps

BEXAR CA

- Use Rate: **27 oz/A** Spray Volume: **100 to 125 gal/A** Tractor Speed: **2 mph**
- **3-day PHI for citrus**
- **Citrus Thrips:** Apply Bexar CA post petal-fall to target citrus thrips. Bexar CA offers a different mode of action (IRAC 21A) to control thrips.
- **Citricola Scale:** Effective on even the heaviest of citricola scale infestations, with control of adults and nymphs within 2-3 days after treatment.
- Also controls katydid, aphid, Asian citrus psyllid, red mite, and contact activity on citrus mealybug



Citrus Thrips Nymphs

FUJIMITE SC

- Use Rate: **2 to 4 pts/A**; add **415 oil**
- **3-day PHI for citrus**
- **Mites:** Apply when mite populations are at treatment thresholds; **also controls ACP nymphs and adults.**
- Good coverage is essential for control. **USE A MINIMUM OF 200 GPA** and a tractor ground speed (less than 2 mph) that allows for complete coverage.
- **Citrus Thrips:** Firm knockdown efficacy on nymphal and adult citrus thrips. Ideal option for pre-bloom or bloom applications. No bloom use restrictions.
- Use Rate for Thrips: **2 pts/A** Spray Volume: **100 to 200 gal/A** Tractor Speed: **2 mph**

NOTE: The above field observations are given as general comments to help in treatment decisions. Individual field conditions can vary widely. Monitor individual fields carefully.

Central Valley	Cash Cadena	(559) 469-3112	ccadena@nichino.net
South/Central Valley	John Erisey	(916) 919-1949	jerisey@nichino.net
North SJV	Octavio Magallanes	(559) 396-5993	omagallanes@nichino.net
South SJV	Brandon Renteria	(559) 920-3466	brenteria@nichino.net