

RED SCALE DEGREE DAY ACCUMULATION*

| AREA | BIOFIX | DD TOTAL May 9, 2024 | 550 DD Crawler Emergence |
|-------------|---------|-------------------------|-----------------------------|
| Arvin | March 4 | 559 | 5/5/23 |
| Delano | March 4 | 679 | 5/1/23 |
| Lindcove | March 4 | 624 | 5/2/23 |
| Orange Cove | March 4 | 547 | 5/8/23 |
| Porterville | March 4 | 606 | 5/3/23 |

*Temperature data and DD models retrieved from UC IPM websites.

The above red scale biofix dates are *only* a guide.

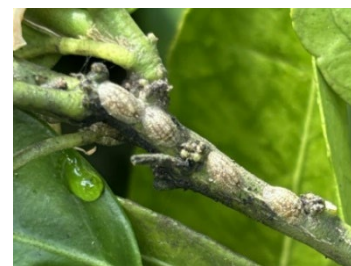


Red Scale in Citrus

FIELD NOTES: Red scale crawler emergence is occurring in Kern, Kings, Fresno, and Tulare County. Now is an ideal time in all four counties to target the first generation of red scale while the insect is synchronized in development and on the wood or foliage. Citrus thrips pressure remains light compared to last year, leaving spray rigs available to get ahead of red scale, especially in problematic blocks. Citrus thrips hot spots can be found with first and second instar nymphs (5-30% infested fruit) but very few adults. It is still early in the season for thrips as most fruit is at the pea-size stage or smaller. Red mite and two-spotted mite populations are starting to pick up across the Valley floor and can be found on leaves and fruit. FujiMite provides strong knockdown on mites and also citrus thrips. Citricola scale crawler hatch has begun as crawlers can be observed moving to the foliage. Red scale and citricola scale hatches are occurring simultaneously this year, providing a great opportunity to control both pests with one application. Cottony cushion scale is moderate across the Valley floor, but crawler hatch remains a few weeks away. Citrus mealybug crawler hatch is projected to occur between May 20 and June 1.

CENTAUR WDG

- Use Rate: **46 oz/A** Spray Volume: **500 to 1000 gal/A** Tractor Speed: **1 to 1.25 mph**
- **California Red Scale: Apply Centaur in May, targeting first generation early crawler emergence (550 DD)**
- To improve coverage on the foliage, add spray oil or a high-quality surfactant, following the directions for use on that product's label.
- When timing Centaur applications, it is always better to **be early rather than late. Centaur has 3 weeks of residual activity on red scale crawlers.**
- **Centaur controls:** Red scale, Citricola scale, cottony cushion scale, and citrus mealybug



Citricola Scale

BEXAR CA

- Use Rate: **27 oz/A** Spray Volume: **100 to 125 gal/A** Tractor Speed: **2 mph**
- **3-day PHI for citrus**
- **Citrus Thrips:** Apply Bexar CA post petal-fall to target citrus thrips. Bexar CA offers a different mode of action (IRAC 21A) to control thrips.
- **Citricola Scale:** Effective on even the heaviest of citricola scale infestations, with control of adults and nymphs within 2-3 days after treatment.
- Also controls katydid, aphid, Asian citrus psyllid, red mite, and contact activity on citrus mealybug



Citrus Thrips

FUJIMITE SC

- Use Rate: **2 to 4 pts/A**; add **415 oil**
- **3-day PHI for citrus**
- **Mites:** Apply when mite populations are at treatment thresholds; **also controls ACP nymphs and adults.**
- Good coverage is essential for control. **USE A MINIMUM OF 200 GPA** and a tractor ground speed (less than 2 mph) that allows for complete coverage.
- **Citrus Thrips:** Firm knockdown efficacy on nymphal and adult citrus thrips. Ideal option for pre-bloom or bloom applications. No bloom use restrictions.
- Use Rate for Thrips: **2 pts/A** Spray Volume: **100 to 200 gal/A** Tractor Speed: **2 mph**

NOTE: The above field observations are given as general comments to help in treatment decisions. Individual field conditions can vary widely. Monitor individual fields carefully.

| | | | |
|----------------------|--------------------|----------------|-------------------------|
| Central Valley | Cash Cadena | (559) 469-3112 | ccadena@nichino.net |
| South/Central Valley | John Erisey | (916) 919-1949 | jerisey@nichino.net |
| North SJV | Octavio Magallanes | (559) 396-5993 | omagallanes@nichino.net |
| South SJV | Brandon Renteria | (559) 920-3466 | brenteria@nichino.net |