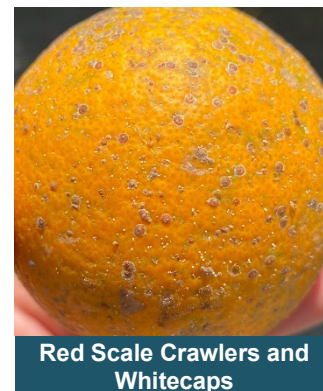


**RED SCALE DEGREE DAY ACCUMULATION\***

AREA	BIOFIX	DD TOTAL May 24, 2023	550 DD 1st CRAWL
Arvin	April 6	674	5/18/23
Delano	April 6	583	5/18/23
Lindcove	April 6	595	5/21/23
Orange Cove	April 6	640	5/21/23
Porterville	April 6	620	5/20/23

\*Temperature data and DD models retrieved from UC IPM websites.

The above red scale biofix dates are *only* a guide.

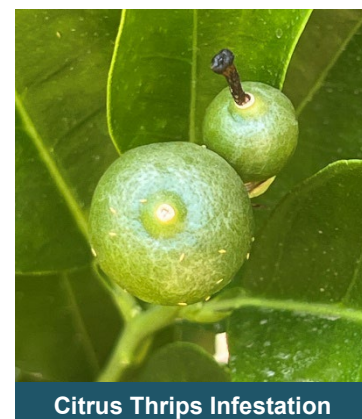


Red Scale Crawlers and Whitecaps

**FIELD NOTES:** Red scale crawlers are active on the wood, leaves, new fruit, and last year's hanging fruit. Whitecaps are also being observed. Citricola scale crawlers are active, and the hatch is heavy. Centaur can be applied for control of both red scale crawlers and citricola scale crawlers. Citrus thrip populations are very high and returning every 5-9 days. Adult citrus thrip populations are rising this week, indicating a hatch coming soon. Growers are using Bexar in combination with Beleaf, Movento, or Exirel in heavy pressure conditions with positive results. Katydid and aphids can be found in ranches in lower populations. Two-spotted mites are beginning to appear beneath leaves and inside end checks on hanging fruit in light to moderate pressure. Red mite populations are still very low. Citrus mealybug crawlers were found in Sanger last week inside the canopy. In areas where citrus mealybug pressure is heavy, all stages can be found, including females with egg sacks. Cottony cushion scale crawlers are active in moderate pressure.

**CENTAUR WDG**

- Use Rate: **46 oz/A** Spray Volume: **500-1000 gpa** Tractor speed: **1-1.25 mph**
- **California Red Scale: Apply Centaur in May, targeting first generation early crawler emergence (550-750 DD)**
- To improve coverage on the foliage, add spray oil or a high-quality surfactant, following the directions for use on that product's label.
- When timing Centaur applications, it is always better to **be early rather than late. Centaur has 3 weeks of residual activity on red scale crawlers, and is also effective on whitecaps, and second instars.**



Citrus Thrips Infestation

**BEXAR CA**

- Use Rate: **27 oz/A** Spray Volume: **100-125 gal/A** Tractor speed: **2 mph**
- **3-day PHI for citrus**
- **Citrus thrips:** Apply Bexar CA post petal-fall to target citrus thrips. Different mode of action (IRAC 21A) to use in rotation.
- **Citricola scale:** Effective on all levels of citricola scale infestation, with control of nymphs within 2-3 days after treatment.
- Also controls katydid, aphid, Asian citrus psyllid, red mite, and contact activity on citrus mealybug

**FUJIMITE SC**

- Use Rate: **2 to 4 pts/A**; add **415 oil**
- **3-day PHI for citrus**
- Apply when mite populations are at treatment thresholds; **also controls ACP nymphs and adults.**
- Good coverage is essential for control. **USE A MINIMUM OF 200 GPA** and a tractor ground speed (less than 2 mph) that allows for complete coverage.

**NOTE: The above field observations are given as general comments to help in treatment decisions. Individual field conditions can vary widely. Monitor individual fields carefully.**

Central Valley	Cash Cadena	(559) 469-3112	ccadena@nichino.net
South/Central Valley	Greg Miller	(480) 993-9664	gmiller@nichino.net
North SJV	Octavio Magallanes	(559) 396-5993	omagallanes@nichino.net
South SJV	Brandon Renteria	(559) 920-3466	brenteria@nichino.net