

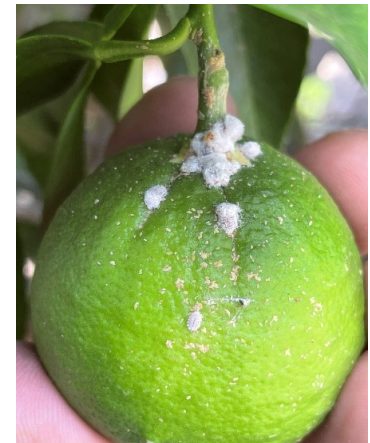
RED SCALE DEGREE DAY ACCUMULATION*

AREA	BIOFIX	DD TOTAL Jul 15, 2021	2750 DD 3rd CRAWL
Arvin	3/19	2233	8/1
Famoso	3/19	2261	8/2
Porterville	3/22	2145	8/5
Orange Cove	3/22	2126	8/6
Madera	3/25	1861	8/15

*Temperature data and DD models retrieved from UC IPM websites

The red scale biofix dates above are *only* a guide. Some PCAs began trapping red scale during the first week of March.

Be advised that these models are based on CIMIS weather station data which can include real temperature data, average temperature data, and back up station data.



Citrus Mealybug

FIELD NOTES

The third generation red scale flight has begun in all citrus districts except for Madera. Citrus thrips treatments are wrapping up, but a few young groves are still being monitored and sprayed as needed to protect young foliage. Citrus mealybug have been making a resurgence in several orchards in Tulare and Fresno Counties now that chlorpyrifos is no longer in the rotation. The summer hatch has just occurred, and the population is pretty synchronized now. Mainly 1st and 2nd instars have been observed and they have begun moving out to the foliage and fruit. Now is the time to treat for this pest! Centaur is an excellent contact and residual product on Citrus mealybug and Bexar will offer contact knockdown activity. Hot temperatures continue to drive two spotted mite and citrus flat mite sprays, but red mite populations have decreased. Now is also the time to treat for citricola scale as nymphs have settled on the leaves and are susceptible.

CENTAUR WDG

- **CA Red Scale: To target 3rd gen crawler emergence, apply CENTAUR at around 2750 DD. At this timing, add an insecticide that controls later stages of red scale.**
- Use Rate: **46 oz/A**
- To improve coverage on the foliage, add spray oil or a high-quality surfactant, following the directions for use on that product's label.
- **CENTAUR has 3 weeks of residual activity on redscale crawlers.**

BEXAR CA

- Bexar CA can take on ANY level of Citricola Scale infestation.
- 'Lights out!' for Citricola scale nymphs in 2-3 days after treatment.
- Also controls katydid, aphid, Asian citrus psyllid, red mite, and thrips.
- Use Rate: **27 oz/A**
- Apply: **300-500 GPA** for citricola scale or 100-150 GPA for citrus thrips. Tractor speed should be 2 MPH or less for maximum performance.
- 3-day PHI in Citrus.



Citricola Scale
Nymphs on Leaf

NOTE: The above field observations are given as general comments to help in treatment decisions. Individual field conditions can vary widely. Monitor individual fields carefully.

Central Valley	Cash Cadena	(559) 469-3112	ccadena@nichino.net
South/Central Valley	Greg Miller	(480) 993-9664	gmiller@nichino.net
North SJV	Octavio Magallanes	(559) 396-5993	omagallanes@nichino.net
South SJV	John Hubbard	(559) 707-7377	jhubbard@nichino.net