

MEALYBUG AND MITE UPDATE™ – GRAPES
APPLAUD® and FUJIMITE®

Apr 30, 2021
ALERT #8

FIELD OBSERVATIONS

KERN COUNTY (Arvin)



**VMB Crawlers
at Base of Bud**

Vine Mealybug (VMB) – VMB continued to be on the move. A significant number of 1st and 2nd instar crawlers were present around the cordon and spur areas. The window for systemic products and Applaud remains open. VMB feeding has led to more wet bark wood being present.
Mites – Spider mite colonies have been increasing in the canopy with eggs being laid.
Leafhoppers – Only Adult Variegated were observed, no nymphs.

FRESNO/TULARE COUNTY

VMB – The majority of the VMB observed were adults and egg masses. Most were under the bark on trunks, and many were still in carpenter worm holes.
Grape Mealybug (GMB) – Second instars biofix set at March 23. This is later than most years. Expect eggs about May 12 in southern Tulare County, and May 15 in Fresno County. The best timing for applications of Applaud for GMB will be the second week of June.
Leafhoppers – First GLH hatch occurred April 27 and VLH will be 2-3 days later. Applaud timing will be coming up soon, followed by organic and other contact materials about May 18-20 in southern Tulare County, or May 22-24 in Fresno County.
Mites - Some vineyards had a few Willamette mites on basal leaves.

MERCED/MADERA COUNTY

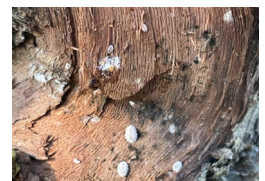
VMB – The mealybugs have move primarily into the top of the trunk and cordons. Most of the adult mealybugs have produced egg masses and ant activity has increased. No movement into the canopy and no presence of nymphs during this period.
GMB and Mites – No activity currently.



Merced/Madera

SAN JOAQUIN COUNTY (Lodi)

VMB – The onset of bloom has arrived in white grape varieties. VMB numbers have increased and have been rapidly moving up the trunks near the cordons. All life stages were present.
GMB and Mites – No significant activity currently.



Northern CA

NORTHERN CA

VMB – Multiple generations of vine mealybug remain underneath the bark midway up the vine. The majority of the mealybugs observed were larger instars. No egg masses were present. Ant activity continues to increase.
GMB and Mites – No activity currently.

The window for applications of APPLAUD is open for Kern County to Fresno County as crawlers continue to emerge in those regions.

Applications of APPLAUD are rainfast as soon as they are dry (actual times will vary based on weather conditions).

Growers/Vineyard managers should always consult with Grower Relations Representatives or Wineries to ensure Applaud is on their Approved/Conditional Use list.

NOTE: The field observations above are provided as general comments to help in treatment decisions. Individual field conditions can vary widely. Monitor individual fields carefully.

Northern CA
Central Valley
South/Central Valley
No. Central Valley
North SJV
South SJV

Anna Page
Cash Cadena
Greg Miller
Braden Cardoza
Octavio Magallanes
John Hubbard

(530) 708-2310
(559) 469-3112
(480) 993-9664
(209) 323-0707
(559) 396-5993
(559) 707-7377

apage@nichino.net
ccadena@nichino.net
gmiller@nichino.net
bcardoza@nichino.net
omagallanes@nichino.net
jhubbard@nichino.net