

COTTON

Courier[®] insect growth regulator provides proven, long-lasting control of whiteflies by preventing molting of nymphal populations.

Key Benefits

- Highly effective on early stages of whitefly nymphs which reduces honeydew production and the incidence of sticky cotton. Whitefly nymphs treated with Courier are controlled as they try to molt to the next stage.
- Courier is not an adulticide; however, it stops adult feeding immediately after application.
- Unique mode of action is effective on populations currently resistant to other products.
- Vapor and contact activity provides full protection - from the undersides of the leaves down to the bottom of the canopy.
- Targeted spectrum of activity - does not disrupt beneficial insects and does not flare mites.

Use Recommendations

- Use Rate: 9.0 to 12.5 fl oz/acre
- Application timing is critical for effective, long-lasting whitefly control. Applications should be made according to the treatment threshold recommendations listed to the right.
- Apply by air in 5 gallons of water per acre or by ground in 10 to 50 gallons of water per acre, using higher water volumes when applying to dense canopies.

Use Information

- Restricted Entry Interval: 12 hours
- Preharvest Interval: 14 days
- Signal Word: Warning
- Restricted Use: No
- Posting Required: No

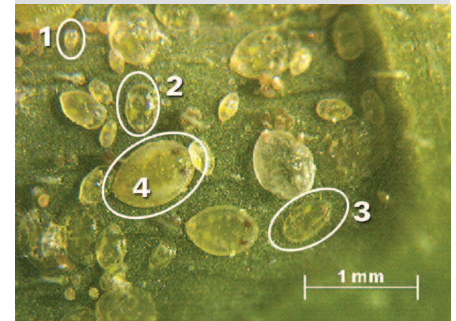
Plantback Timings

All crops registered for use with buprofezin	0 days following application
Cereal grains	30 days following application
All other crops	60 days following application

Resistance Management

- Group 16 insecticide
- Rotate the use of Courier with alternate mode-of-action insecticides

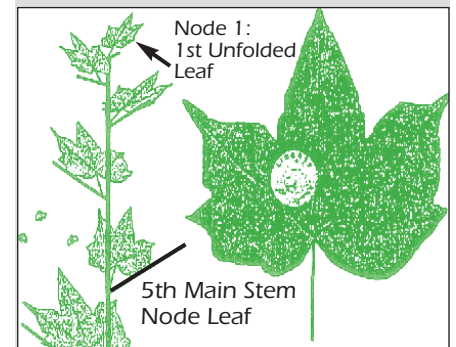
Courier controls whitefly nymphs in stages 1, 2, & 3 and prevents population build-up



John Palumbo, University of Arizona

Sampling of Nymph Population is Key

1. Sample the 5th main stem leaf.
2. Count adults by turning the leaf. Counts include those that fly off as the leaf is turned.
3. Detach the leaf and count nymphs within a quarter-sized disk that are visible to the naked eye (3rd and 4th instar).



Courier Treatment Threshold

Adults:

3 to 5 adults per leaf or at least 3 per leaf on 40% of leaves

Nymphs:

1 large nymph per disk on 40% of leaves