



# For Control of San Jose Scale

## ALMONDS, PISTACHIOS, POME FRUIT, STONE FRUIT

### Key Benefits

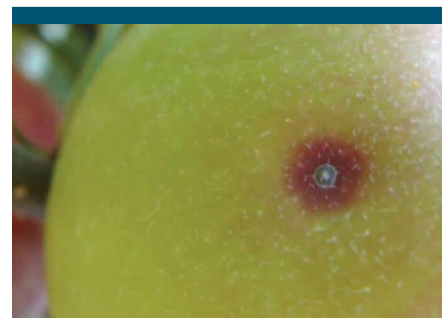
- **Excellent San Jose Scale Control:** Controls multiple immature life stages
- **Additional Activity:** Effective on soft scales, leafhoppers, pear psylla, and mealybugs
- **IPM Friendly:** Will not harm beneficial insects
- **Cost Effective:** Economical and effective scale control
- **Excellent Worker Safety:** 12 hour reentry interval, minimal PPE

### Use Recommendations

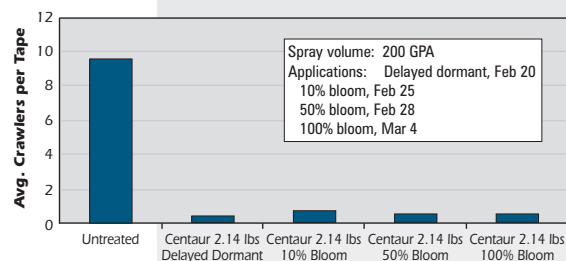
- Apply at dormant, prebloom, during bloom, or in-season at crawler emergence
- Use of oil may improve scale control
- Use a minimum of 100 gallons of water per acre
- Use Rates: 34.5 to 46 oz per acre

### Resistance Management

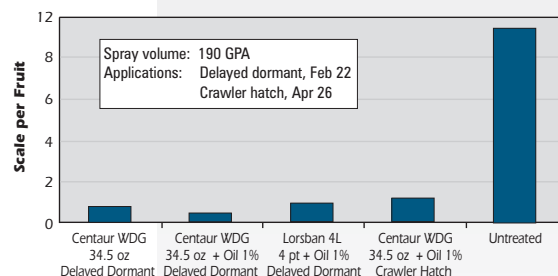
- Unique mode of action: IRAC Group 16
- Excellent rotational product



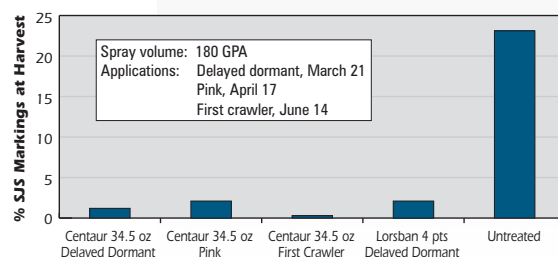
**San Jose Scale – Almonds 176 DAA**  
Merced, CA



**San Jose Scale – Plums**  
Reedley, CA



**San Jose Scale – Apples**  
Hood River, OR



**NICHINO**  
AMERICA